

RUMEX STERILIZATION TRAYS

RUMEX sterilization trays are designed to assist the user in the handling, sterilizing and storing of surgical instruments.

AUTOCLAVE
STEAM
DRY HEAT
CHEMICAL



PLASTIC STERILIZATION TRAYS

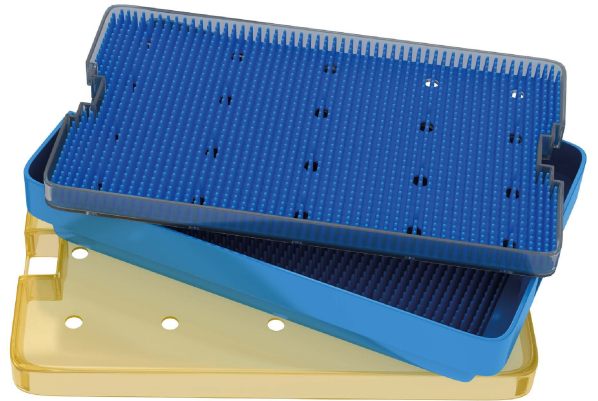
**MOST
POPULAR**

RUMEX plastic trays are molded from General Electric's ULTEM® resin, using mold flow analysis to guarantee product strength, structural integrity, and extended life cycle.

18-305

Double level
Tray comes with removable upper-level insert and mat
Accommodates up to 30 instruments

254×152.40×38 mm
10×6×1.5"



ALUMINUM STERILIZATION TRAYS

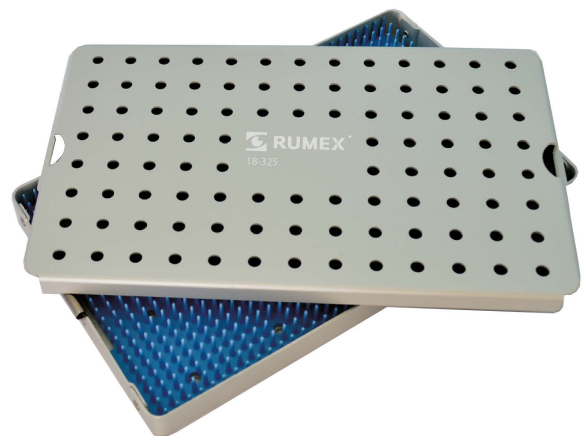
NEW

- Manufactured from an anodized aluminum alloy to prevent corrosion, ensure fast drying and long-term use
- Lightweight* for easy transportation and handling

18-324

With silicone fingertip mat for instrument's stability during sterilization, transportation and storage
Accommodates up to 15 instruments

260×160×20 mm
10.25×6.25×0.8"



*Compared to Stainless Steel Trays

Different sizes are available

Product design and/or features that do not influence its functionality and main parameters are subject to change

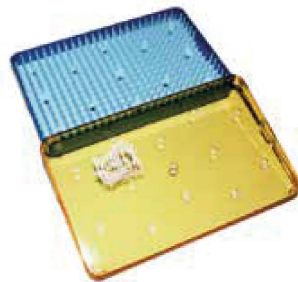
SIZE CHART

ITEM	DIMENSIONS, (L×W×H) mm	in	CONFIGURATION	ACCOMMODATES, NUMBER OF INSTRUMENTS
PLASTIC TRAYS				
18-301-1	152×63.5×19	6×2.5×0.75"	Single level	2
18-301	152×63.5×19	6×2.5×0.75"	Single level	2-3
18-302	165×101×19	6.5×4×0.75"	Single level	4-5
18-303	190×101×19	7.5×4×0.75"	Single level	4-6
18-304	254×152×19	10×6×0.75"	Single level	10-15
18-305	254×152.4×38	10×6×1.5"	Double level	20-30
18-307	68.5×38×25.5	3×1.5×1"	Single level	1-2
ALUMINUM TRAYS				
18-319	155×65×20	6.0×2.5×0.80"	Single level	2-3
18-321	200×65×20	7.75×2.5×0.80"	Single level	4-5
18-322	200×110×20	7.75×4.25×0.80"	Single level	4-6
18-324	260×160×20	10.25×6.25×0.80"	Single level	10-15
18-327	260×160×80	10.25×6.25×3.25"	Double level	20-30
18-332	310×235×20	12.25×9.25×0.80"	Single level	20-30
18-334	390×265×20	15.5×10.5×0.80"	Single level	25-35
18-336	390×265×40	15.5×10.5×1.5"	Double level	50-70

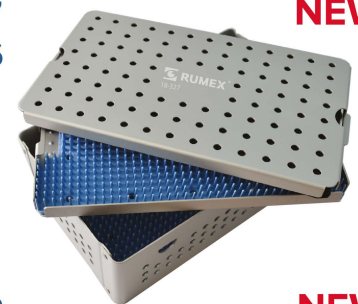
**MOST
POPULAR**
18-301



POPULAR
18-302
18-303
18-304



18-327
18-336



NEW

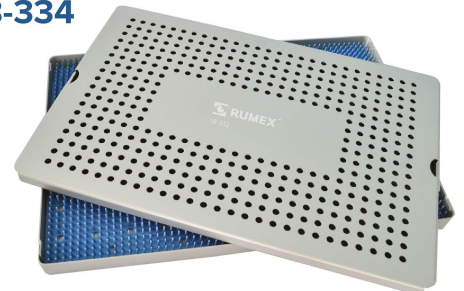
POPULAR
18-301-1



NEW
18-319
18-321



18-332
18-334

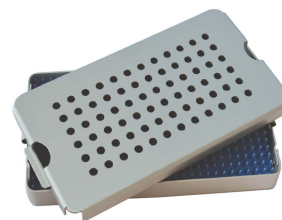


NEW

POPULAR
18-307



NEW
18-322



Different sizes are available

Product design and/or features that do not influence its functionality and main parameters are subject to change